

**NODAWAY-HOLT SCHOOL
DISTRICT
ACHIEVEMENT DATA**



2024

MSIP 6 & THE APR



MSIP AND THE APR

The Missouri School Improvement Program (MSIP)

- Outlines expectations for school practices and student outcomes;
- Supports the statewide goal that each student graduates ready for success in college, career, and life; and
- Produces an APR for each local education agency (LEA) and building.



MSIP 6 STANDARDS & INDICATORS

Scored in the APR are:

- Six different strands ranging from leadership to standards, curriculum, and assessment.
- Individual standards within these strands are sorted into three main categories:
 - Performance
 - Continuous Improvement
 - Best Practice



PURPOSE OF THE APR

The APR indicates progress of Missouri students, schools, and LEAs toward standards adopted by the State Board of Education. It is:

- Produced for all school districts and charter LEAs
- Used in the process for classifying school districts
- Required for renewal decisions made by charter sponsors
- One of many ways that parents and communities evaluate LEAs



MSIP 6 APR SCORING

Performance

Achievement Status (All Students 16%, Student Groups 8%)	24%
Achievement Growth/Improvement (All Students 16%, Student Groups 8%)	24%
Success-Ready	10%
Graduation Rate	10%
Follow-up	2%
<i>Sub-total</i>	<i>70%</i>

Continuous Improvement

Improvement Planning (CSIP 15%, Self-Study 4%, Climate & Culture Survey 2%)	21%
Success-Ready	6%
Required Documentation	3%
<i>Sub-total</i>	<i>30%</i>
Total	100%



MSIP 6 SCORING OF AVAILABLE MEASURES

	2022 Apr ¹	2023 APR ²	2024 APR ²
Achievement Status	48	48	48
Acheivement Growth	36 ³	48	48
Success-Ready ⁵	20	20	20
Graduation Rate	20	20	20
Follow-up	4	4	4
Continuous Improvement Plan	30 ⁵	30 ⁵	30
Response to Standards	N/A	N/A	8
Climate and Culture Survey	4 ⁵	4 ⁵	4
Required Documentation	6	6	6
Sucecss-Ready ⁴	12	12	12
Totals	180	192	200

¹Results from the 2022 APR may not be used to lower classification (161.855, 4, RSMo).

²Classification not lowered due to performance.

³Includes English language arts and mathematics only.

⁴Success-Ready metrics are included in performance and continuous improvement.

⁵Estimated scores.



APR COMPOSITE

2022, 2023, & 2024

UPDATES TO THE 2024 MSIP 6 APR

Topic	Updates Outlined in the <i>MSIP 6 Comprehensive Guide</i>
Achievement Growth	<ul style="list-style-type: none">● Updates and simplifies Achievement Growth scoring.
Success-Ready Students (Performance)	<ul style="list-style-type: none">● Uses college- and career-ready assessment and advanced coursework date from <u>prior year graduates</u>.● Allowed for LEA review and correction of data prior to June 30.● Necessary for earlier processing and release of data.
Response to Standards	<ul style="list-style-type: none">● Included in APR as planned.● Applies to all LEAs.● Eight points possible.
Composite Score	<ul style="list-style-type: none">● Averages three years of APR data.● Informs classification recommendations.



UPDATES TO THE 2024 MSIP 6 APR CONTINUED

What is a composite score?

- The APR Composite Score represents three years of APR data.

How is the APR Composite Score calculated?

- Points earned at the indicator level are summed and divided by three creating a three-year value for each indicator.
- Total points earned is a sum of three-year values for all indicators.
- The value for total points possible is calculated in the same way.
- The totals are used to calculate the APR Composite Score percentage.



ABOUT THE COMPOSITE

The 2024 APR data includes a composite score that includes data from 2022, 2023, and 2024. This information will serve as guidance for the upcoming classification of districts which will be determined in January of 2026. The 2025 results will also be included in the composite scores.

Classification Composite Score:

- Accredited with Distinction: 95% and above.
- Accredited: 70% to 94.9%
- Provisionally Accredited: 50% to 69.9%
- Unaccredited: 49.9% and below



NODAWAY-HOLT CURRENT COMPOSITE

2024 MSIP 6 Composite Annual Performance Report (APR)

The 2024 Composite APR includes data from the 2022, 2023, and 2024 APRs.

	Points Possible	Points Earned	% Points Earned
Performance:	116.0	76.2	65.6%
Continuous Improvement:	60.0	59.3	98.8%
Total:	176.0	135.5	76.9%

Data as of: 11/18/2024

Report as of: 12/13/2024

Accredited: 70% to 94%



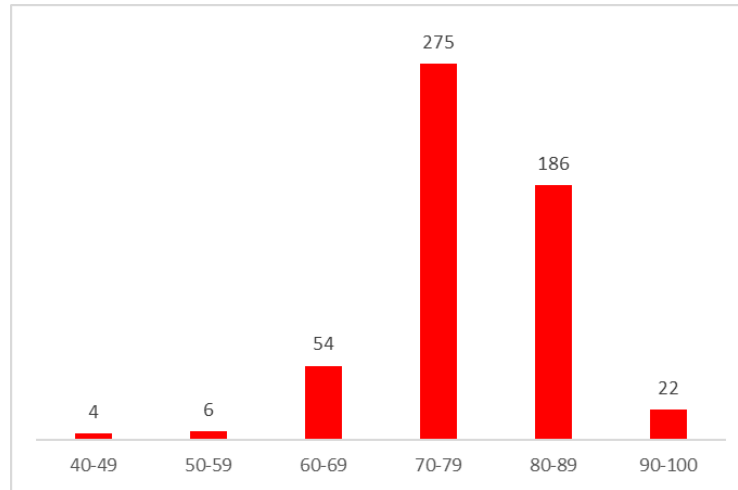
NORTHWEST REGION APR RESULTS SUMMARY

APR PERCENTAGES	2022	2023	2024
95 - 100%	0	1	2
70 - 94.9%	48	52	50
50 - 69.9%	11	6	7
49.9% and below	0	0	0



2024 PRELIMINARY APR COMPOSITE SCORE DISTRIBUTION

*Includes 2022, 2023, and 2024 APR Data^{1, 2}



¹ Results from the 2022 APR may not be used to lower classifications (161.855, 4, RSMo).

² Distribution of scores between 40% and 100%

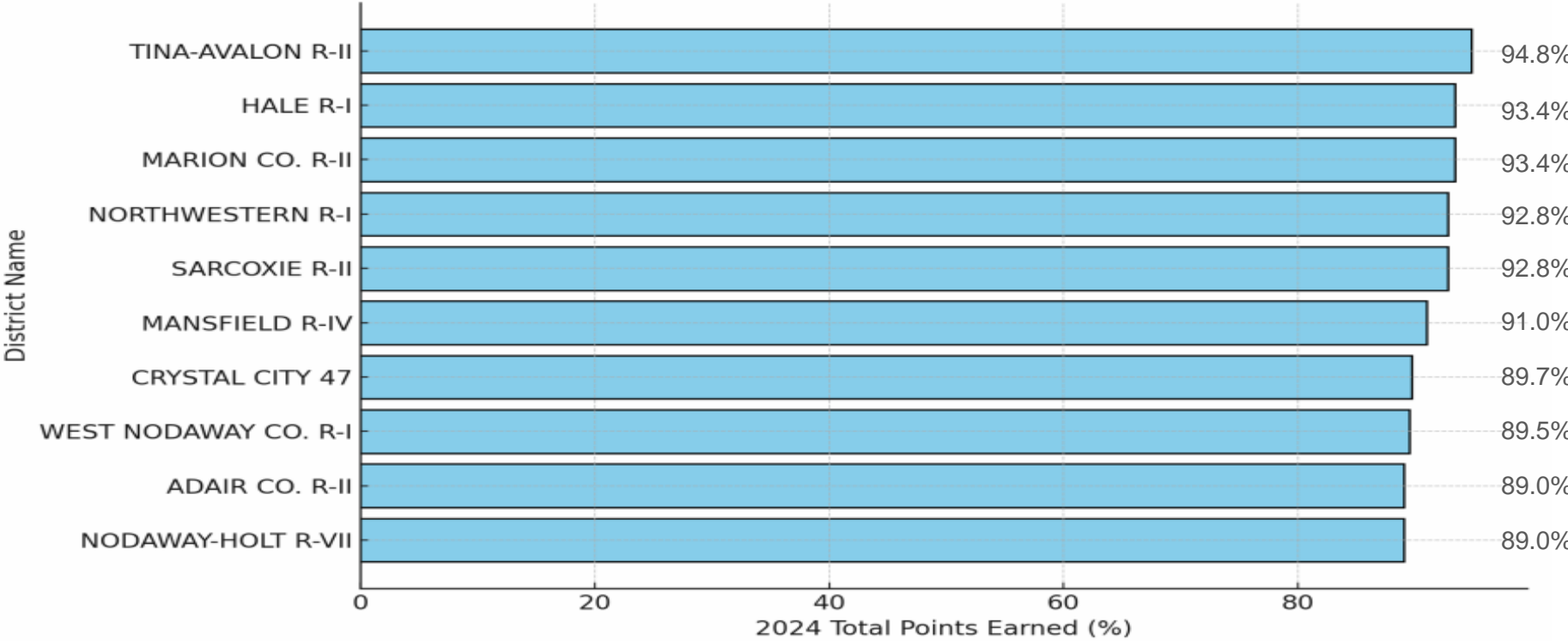


COMPARATIVE APR ANALYSIS OF MISSOURI 4-DAY SCHOOLS

BY GRADE LEVELS SERVED (K-12 OR K-8)

4 Day Week K- 12 Schools—Total APR Points Earned

Top 10 Performing Grade 12 Schools

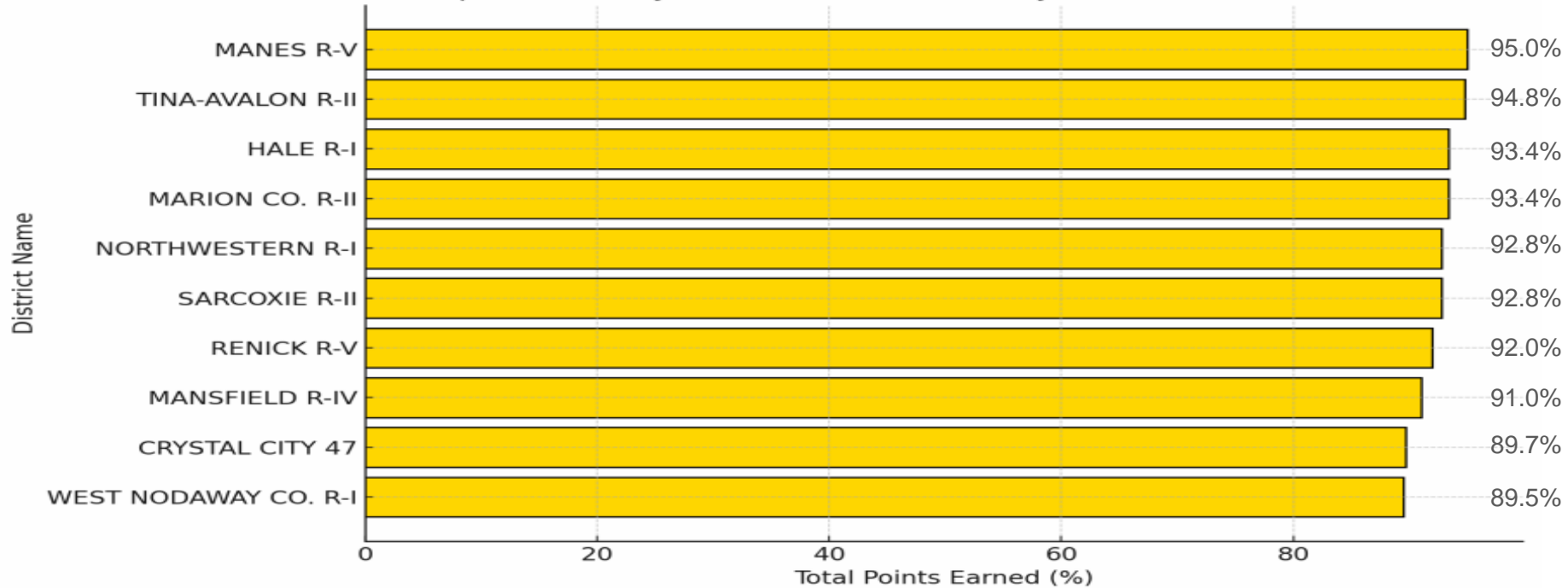


School districts that earned the same APR are in alphabetical order.



Overall Top Missouri Four-Day School Week Districts Total Points Earned (2024)

Top 10 Four-Day School Week Districts by Total Points Earned (2024)



Swedeborg R-III, 89.3%, ranks #11 and then Adair Co. R-II and Nodaway-Holt tie for #12 in the state with an 89.0%.

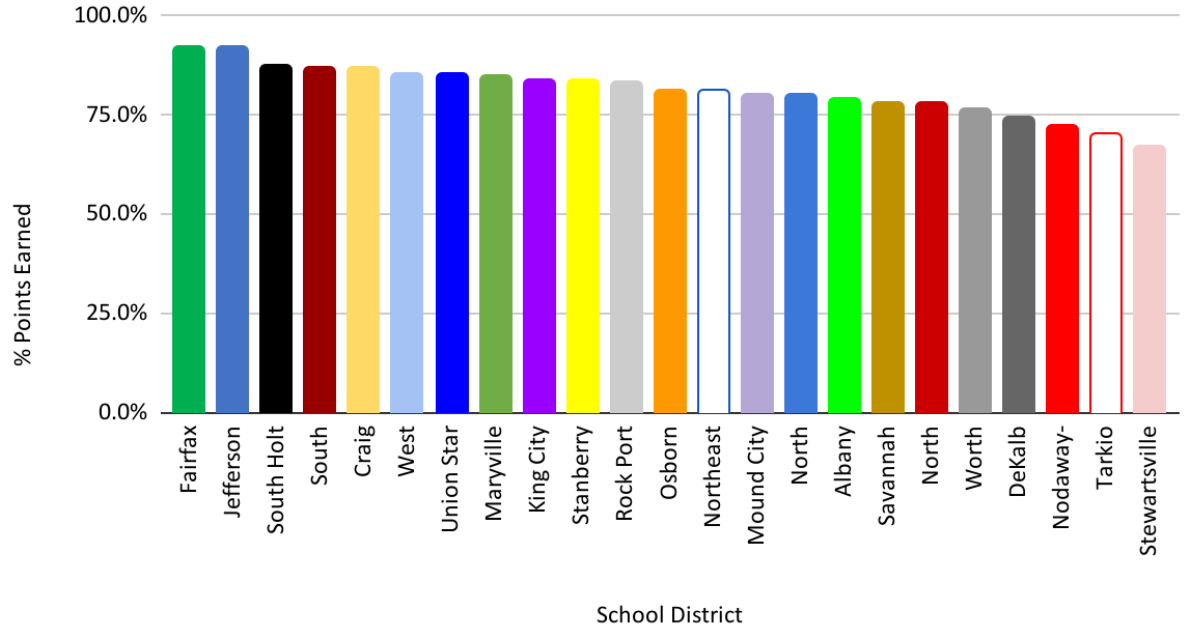


DISTRICT VS. CONFERENCE & SURROUNDING DISTRICTS

MSIP 6 APR SUMMARY REPORTS

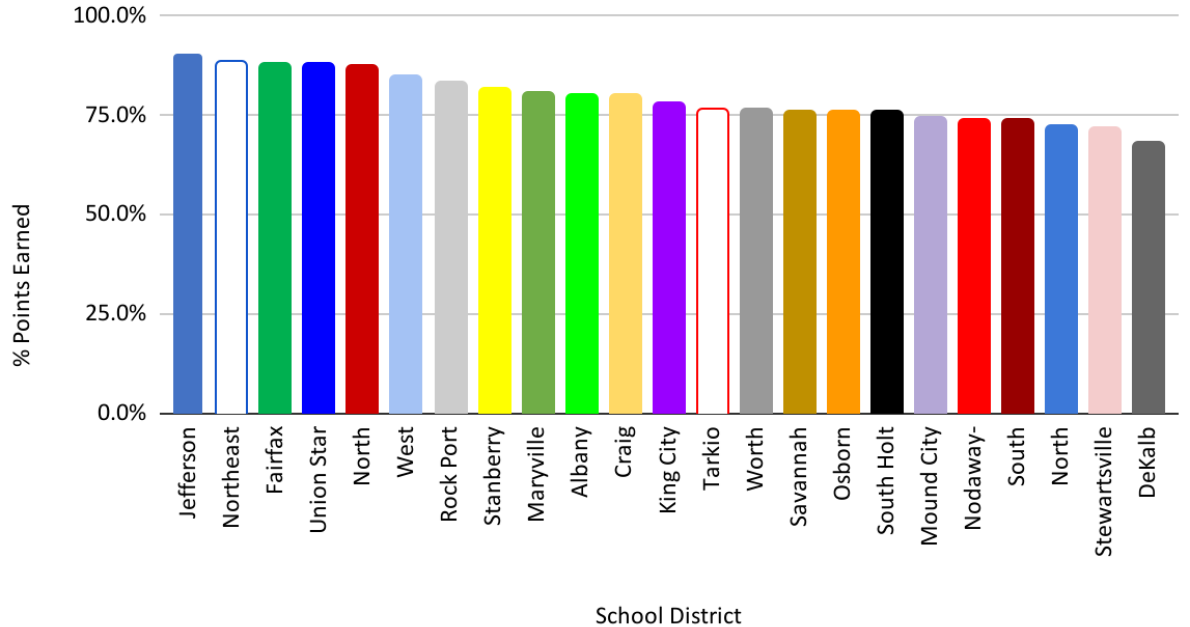
School District	2022	Rank
Fairfax	92.3%	1
Jefferson	92.0%	2
South Holt	87.6%	3
South Nodaway	87.1%	4
Craig	86.9%	5
West Nodaway	85.5%	6
Union Star	85.1%	7
Maryville	84.6%	8
King City	83.8%	9
Stanberry	83.6%	10
Rock Port	83.1%	11
Osborn	81.3%	12
Northeast Nodaway	81.0%	13
Mound City	80.2%	14
North Nodaway	80.0%	15
Albany	79.1%	16
Savannah	78.1%	17
North Andrew	77.9%	18
Worth County	76.4%	19
DeKalb	74.3%	20
Nodaway-Holt	72.3%	21
Tarkio	70.3%	22
Stewartsville	67.1%	23

2022 MSIP6 District APR Summary Report



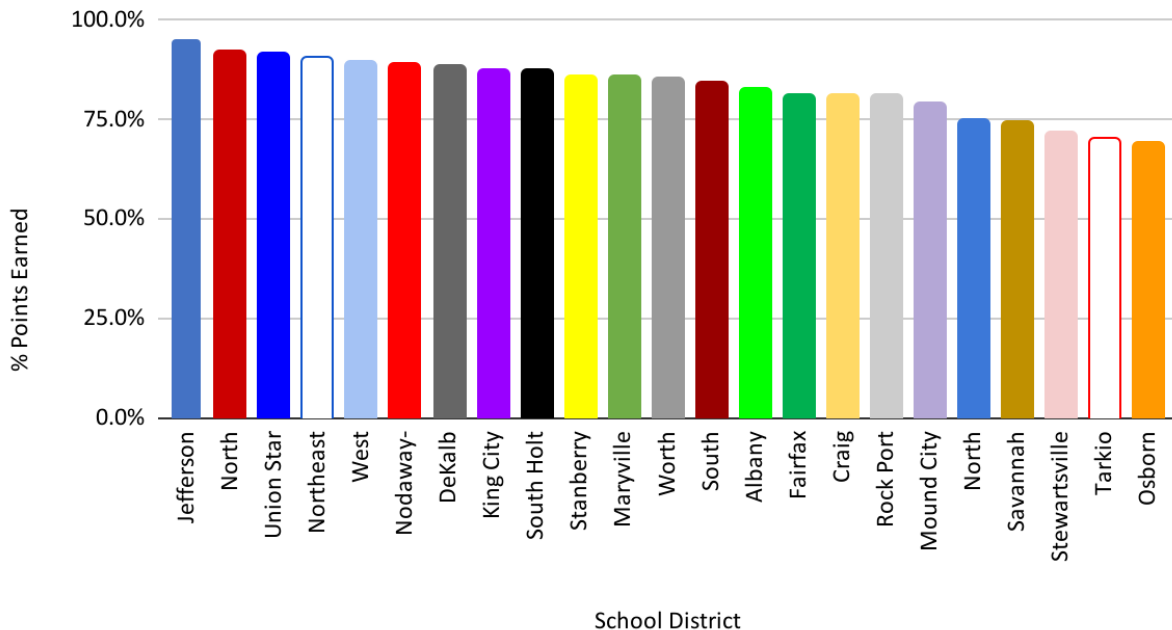
School District	2023	Rank
Jefferson	90.7%	1
Northeast Nodaway	88.7%	2
Fairfax	88.0%	3
Union Star	88.0%	4
North Andrew	87.3%	5
West Nodaway	84.6%	6
Rock Port	83.5%	7
Stanberry	81.8%	8
Maryville	80.9%	9
Albany	80.0%	10
Craig	80.0%	11
King City	78.3%	12
Tarkio	76.5%	13
Worth County	76.5%	14
Savannah	76.2%	15
Osborn	76.1%	16
South Holt	76.1%	17
Mound City	74.5%	18
Nodaway-Holt	73.9%	19
South Nodaway	73.7%	20
North Nodaway	72.2%	21
Stewartsville	71.9%	22
DeKalb	68.3%	23

2023 MSIP6 District APR Summary Report



School District	2024	Rank
Jefferson	95.1%	1
North Andrew	92.0%	2
Union Star	91.4%	3
Northeast Nodaway	90.4%	4
West Nodaway	89.5%	5
Nodaway-Holt	89.0%	6
DeKalb	88.3%	7
King City	87.5%	8
South Holt	87.5%	9
Stanberry	85.9%	10
Maryville	85.7%	11
Worth County	85.6%	12
South Nodaway	84.2%	13
Albany	82.6%	14
Fairfax	81.4%	15
Craig	81.2%	16
Rock Port	81.2%	17
Mound City	79.1%	18
North Nodaway	74.7%	19
Savannah	74.2%	20
Stewartsville	71.6%	21
Tarkio	70.3%	22
Osborn	69.0%	23

2024 MSIP6 District APR Summary Report



DISTRICT VS. STATE OVERALL

PERFORMANCE LEVEL 2024

CSIP Goal 1.1 - By 2026 students scoring in the bottom two categories of the MAP or EOC will decrease by 3-5%.

2024 STATEWIDE APR COMPARRISON

- When comparing Nodaway-Holt to all 552 school districts in the state we tied for number 67.
 - Placing Nodaway-Holt in the top 12.14% of APR scores in the state.
- When comparing Nodaway-Holt to the 458 school districts that are PK-12 or K-12 school districts, not PK-8 or K-8, we tied for number 49 in the state.
 - Placing Nodaway-Holt in the top 10.70% of PK or K-12 school district's APR scores in the state.



ACT

CSIP Goal 1.4 - The average ACT composite scores for juniors and seniors will meet or exceed the state average on an annual basis.



(21) ACT Results

(Data as of
11/13/2024)

MISSOURI	2024
Percent of Graduates Taking the ACT	63.00%
Composite ACT Score	19.90
NODAWAY-HOLT R-VII	2024
Percent of Graduates Taking the ACT	64.30%
Composite ACT Score	21.80

INFORMATIONAL LINKS



- [2024 MSIP6 District/Charter Composite APR Summary Report – Public Final](#)
 - Use the dropdown box that says <Select a Value> next to **LEA** to find and select *Nodaway-Holt R-VII (074187)* then click the *View Report* button on the right.
- [MSIP 6 LEA Summary for Annual Performance Report](#)
 - Use the dropdown box that says <Select a Value> next to **LEA** to find and select *Nodaway-Holt R-VII (074187)* then click the *View Report* button on the right.
- [Nodaway-Holt District Report Card](#)
 - If Nodaway-Holt does not automatically appear: Use the dropdown box that says <Select a Value> next to **District** to find and select *Nodaway-Holt R-VII (074187)* then click the *View Report* button on the right.

